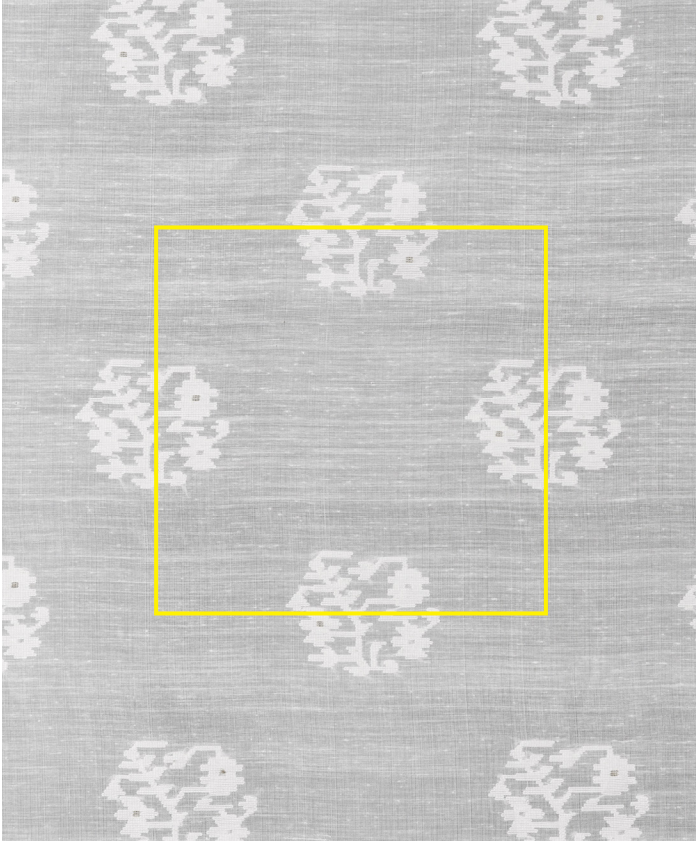


n a m a y s a m a y

Urmi Cream | JUR-04

Jamdani is an intricate traditional hand weaving technique from Bengal, where motifs are produced by supplementary weft threads inlaid during the weaving process in the muslin cloth. Developed from a mid 19th Century Jama dress.



Design	Urmi
Colour	Cream
Code	JUR-04
Composition	50% Silk 50% Cotton
Width	120cm / 47in
Repeat	15.5cm (h) 15.5cm (v) 6in (h) 6in (v)
Weight	37.5g/sqm
Notes



Urmi Cream | JUR-04

www.namaysamay.com

